

# Relationships



## as a house

We often Draw Circles to describe relationships. This can be confusing because what do the circles really mean, and some people may cross through circles

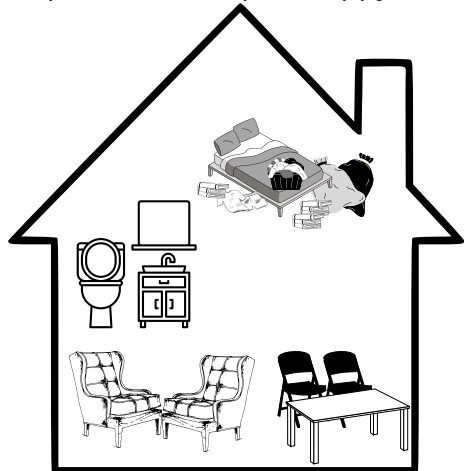
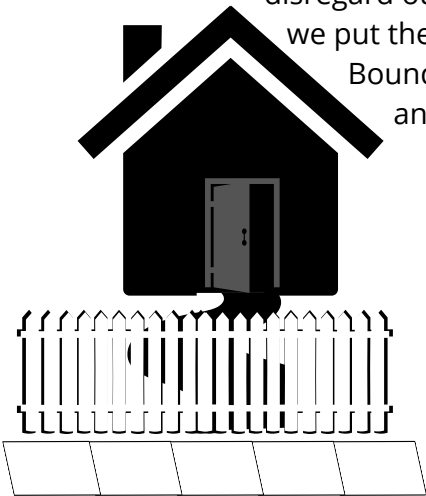
I was talking to someone who thought about relationships as to where she allowed them in her house. I think this is a great way to look at it.

So looking at the house where do our relationships stand. Do we allow people into parts of our lives that maybe they have lost the trust to enter into those spaces. Do we need to change the boundaries in some of these relationships to help the relationships serve both us and the other person.

Do we have trouble letting people in? Have we set up strict boundaries that are not serving us and preventing us from making healthy relationships?

Do we lack boundaries? Do we find others often disregard our feelings, time, belongings, or body? Do we put the needs of others before our own needs?

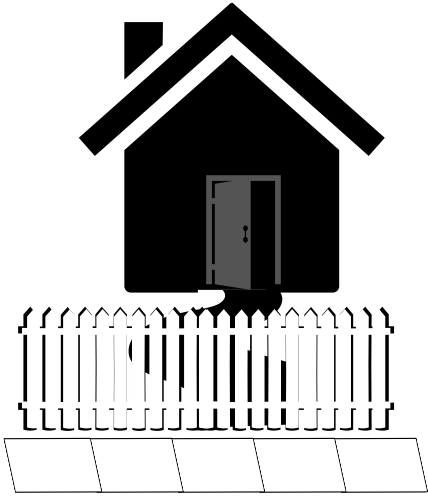
Boundaries are important to keep us happy and safe



# Relationships as a house

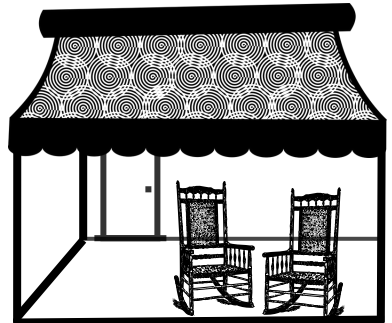
Who in our lives do we or should we keep

- Outside the gate on the sidewalk



- At the front door

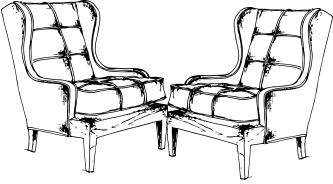
- On the front porch



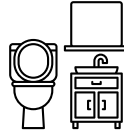
# Relationships as a house

Who in our lives do we or should we let

- Visit in the kitchen or living room



- See upstairs



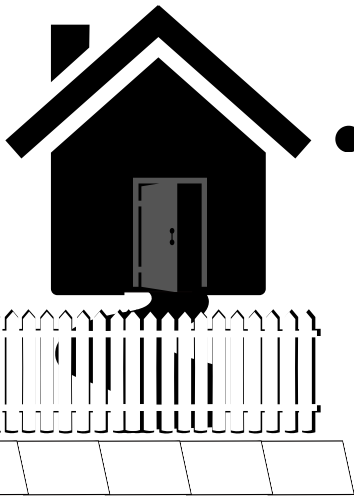
- See upstairs... when its messy



# Relationships as a house

We often Draw Circles to describe relationships, lets try a house.

Who in our lives do we or should we keep



- Outside the gate on the sidewalk
- At the front door
- On the front porch



Who in our lives  
do we or should we let

- Visit in the kitchen or living room

- See upstairs
- See upstairs... when its messy

